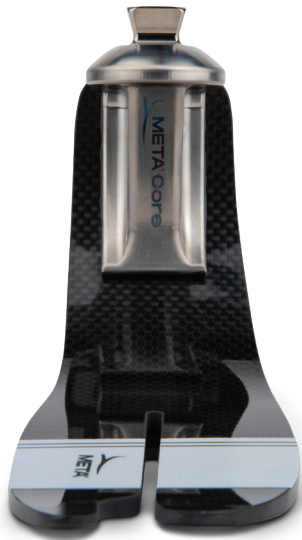


WILLOWWOOD®

META® Core



Product Highlights

- Boltless, unibody carbon fiber design
- Greater than 95% dynamic spring energy return
- Split keel
- Corrosion resistant and waterproof

The META Core foot is built on the founding features of the META® architecture – a high activity carbon fiber prosthetic foot with a revolutionary unibody design. This patent-pending breakthrough features a single piece of carbon fiber, which is free of wraps and hardware to reduce weight while maximizing dynamic response.

META Core delivers natural roll-over and greater support in late-stance for K3/ K4 users. With a low-build height and weight, the enhanced META-Unibody® plate design maximizes energy return and provides increased foot flexibility.



PDAC
APPROVED



- ✓ Transfemoral
- ✓ Transtibial

PDAC Approved L-Code: L5981

META Core Foot: Specifications

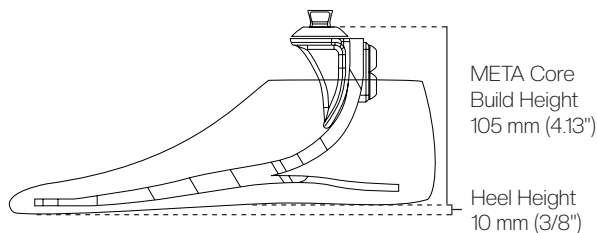
Heel Height: 10 mm (3/8")

Build Height: 105 mm (4.13")

Approximate Product Weight: 560 g

*Std. size 26 Cat. 5 with foot shell and sock

Trial Period: 60 days from date of patient fitting



Sandal Toe Foot Shells



Medium Brown



Tan



Buff

META Core Category Chart

Adjusted User Weight (patient body weight + loads carried)	Low Impact Level		Medium Impact Level		High Impact Level	
	Sizes 22-24 cm	Sizes 25-30 cm	Sizes 22-24 cm	Sizes 25-30 cm	Sizes 22-24 cm	Sizes 25-30 cm
99-115 lbs (45-51 kg)	1	1	1	1	2	2
116-130 lbs (52-58 kg)	1	1	2	2	3	3
131-150 lbs (59-67 kg)	2	2	3	3	4	4
151-170 lbs (68-76 kg)	3	3	4	4	5	5
171-194 lbs (77-87 kg)	4	4	5	5	-	6
195-221 lbs (88-99 kg)	5	5	-	6	-	7
222-256 lbs (100-115 kg)	-	6	-	7	-	8
257-287 lbs (116-130 kg)	-	7	-	8	-	9
288-324 lbs (131-147 kg)	-	8	-	9	-	-
325-365 lbs (148-165 kg)	-	9	-	-	-	-

*Note: The Standard impact level is recommended for most patients for day-to-day use; high impact level should be chosen for active outdoor users engaged in activities that involve heavy ground impact forces (e.g. sports, construction work)

The META Lineup

All META feet feature the groundbreaking META-Unibody® design that combines dynamic response with lightweight, hardware-free design suitable for K3-K4 users. The design delivers a smooth roll-over experience and delivers support in mid-terminal stance enhancing stability without compromising function.



META Core

Smooth rollover and late-stance support for K3-K4 users low-build height and weight.

PDAC approved: L5981



META Arc

Biomimetic ankle offers stability and adaptation to terrain. 20° of inversion & eversion.

PDAC approved:
L5981 + L5986



META Shock

Adaptive shock absorption via integrated shock module 13 mm of vertical displacement.

PDAC approved: L5987



META Shock X

Adaptive shock absorption and impact protection via 40° of torsional rotation + 13 mm vertical displacement.

PDAC approved:
L5987 + L5984



Fiberglass META Shock X

Adaptive shock absorption and impact protection via 40° of torsional rotation + 13 mm vertical displacement with a fiberglass unibody platform.

PDAC approved:
L5987 + L5984

How To Order

META Core Foot with Spectra Sock

Ordering example:

META Core Foot, 25 cm, left foot, toe resistance 2

M001-25L-02

Model	Size of Foot	Foot	Toe Resistance
M001 = META Core Foot	22-30 cm	L = left R = right	01-09 (Refer to the chart above)

Sandal Toe Foot Shell

Ordering example:

Sandal Toe Foot Shell, 25 cm, left foot, tan

FS01-25LT

Size of Foot	Foot	Color
22-30 cm	L = left R = right	B = buff T = tan M = medium brown